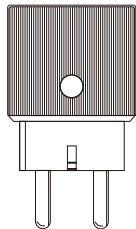


# Smart Socket

## User Manual



### 1.Specification

Rated power:	3500W
Rated voltage:	100V-240V
Rated current:	16A
Operating temperature and humidity:	0-40°C; 10%-90%RH
Power consumption statistics:	Yes
Connection protocol:	WiFi2.4GHz/Zigbee3.0
Transfer specification:	European standard to European standard
RGB lighting:	red / white / blue / green
Waterproof rating:	IP20



### 2.Indicator Light Description

- 1.Blue color:The plug is turn off.
- 2.White color:The plug is turn on.
- 3.Green color:The plug is on and loaded
- 4.Red color:The plug load reaches 80% of the full load, reminding you not to work in this state for a long time.
- 5.Blue color and flashing:Network connection status

### 3.Network Connection

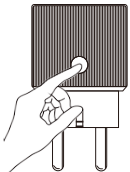
#### WiFi

- 1.Scan the QR code to download "Smart Life"APP

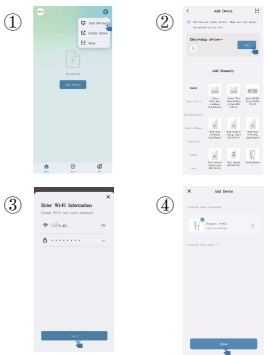


【Smart Life】 App

2. Long press the button for more than 3 seconds until the indicator light begin to flash quickly,this means the device is already for configuration.



- 3.Make sure your mobile phone is connected to 2.4G WiFi and turns on Bluetooth, then open the ("Smart Life"APP). Click "+" (Add sub-device) to select the device and follow the on-screen instruction for pairing.



#### Zigbee

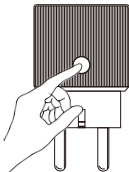
- 1.Scan the QR code to download "Smart Life"APP



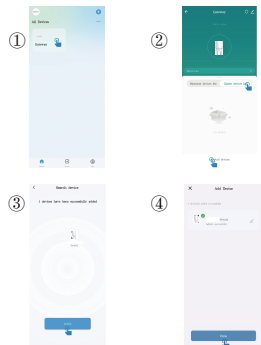
【Smart Life】 App

- 2.Make sure the Zigbee gateway is connected to the app.

3. Long press the button for more than 3 seconds until the indicator light begin to flash quickly,this means the device is already for configuration.



- 3.Enter the gateway connection interface, choose the zigbee device,Click"+"(Add sub-device) and follow the on-screen instruction for pairing.



### 4.Precautions

- ① Do not disassemble the smart socket yourself - contact support for repairs.
- ② Keep away from liquids to prevent short circuits.
- ③ Use dry cloth only - avoid cleaning with liquids/detergents.
- ④ Do not place near open flames or heat sources.
- ⑤ Unplug during thunderstorms.
- ⑥ Ensure proper ventilation and avoid stacking sockets.



Product installation video